

Plugged in

INSIDE:

- Brean Sands' £2m makeover
- Somerset hits the skills jackpot
- How to get a job at Hinkley Point C



Working on wellness

ROB'S RETURN



Welcome to the Summer issue of **Plugged in**.

I am thrilled to be back at Hinkley Point C, reconnecting with familiar faces and pushing on with one of Britain's most important low carbon energy projects.

Construction has been progressing at an impressive pace. The progress is only happening thanks to the hard work of the thousands of people on-site every day. Looking after them is incredibly important and I am proud of our continued dedication to mental health and wellbeing. You can find out more about this important topic on pages 10 and 11.

Support for our community is incredibly important to us too, and it's great to see so many people from our project extending a helping hand as part of their volunteering work (see page 3). If you have any volunteering opportunities that would benefit your community, please reach out to us using the contact details below.

On pages 12 and 13, you will be able to find out more about the wider benefits of Hinkley Point C as shown in this year's Socio-Economic Report. We are committed to continuing this positive work, making the most of the opportunities and ensuring that our presence provides a lasting and meaningful benefit to the local area.

Rob Jordan
Project Construction Director

Five minutes with... Rob Jordan

Rob Jordan, Project Construction Director, talks about his return, where his focus lies for the rest of 2023 and how he views the connection between Hinkley Point C and the local community...

How does it feel being back on the project?

"I'm absolutely honoured to be here and it was a great privilege to be asked to return after 14 months working on another new build nuclear project in Slovakia. The advancements that have been made are clear as you walk around site not just in terms of progress, but also regarding the number of people who have joined our Hinkley Point C family."

What are the big goals for the rest of the year?

"Dome lift is key. That's when we install the top section of the containment that sits inside our first nuclear reactor. It's an incredibly important milestone for the project."

How important is the work that's being done?

"I believe that everyone at Hinkley Point C is delivering something that will protect the environment and sustain our existence. People working here are providing a credible solution to climate change."

When you think about the impact of the project so far, what stands out to you?

"Putting apprenticeships back on the radar for young people. We're developing individuals who will lead the nuclear industry in the UK and potentially the globe. It's a great source of joy for me to be able to welcome our apprentices because I started my career as an apprentice. There is access to brilliant opportunities on this project that will set people up for life."

How do you view the project's relationship with the local community?

"A lot of team members here are local, so I see it as the local community is directly helping us deliver every day. Plus, those of us who have come from elsewhere are now living in this community. And I know that there's a huge sense of respect on both sides."

Making a difference

We're celebrating some of the people at Hinkley Point C lending a helping hand to community groups across Somerset.



Digging in to plant a woodland legacy

James Thieme, Health and Safety Manager for Hinkley Point C, found the ideal opportunity to volunteer right on his doorstep in Taunton, where the Maidenbrook Country Park charity is creating the Somerset Wood.

Along with a band of dedicated volunteers, James has planted more than 4,000 of the 11,000 trees planned for the site. All of the trees are indigenous (already growing in the region) and they are donated by nurseries, community gardens, and developers across the region.

"There's a handful of us regular volunteers but when the planting is happening, up to 30 local families turn out to dig in – it's a real community effort," he said. "It's a beautiful, peaceful place. I'm hoping to be here long enough to see all the trees planted and the planned community and educational centres created there too. It's already making a difference to the local communities."

Find out more at [somerset.gov.uk/community-leisure-and-tourism/the-somerset-wood](https://www.somerset.gov.uk/community-leisure-and-tourism/the-somerset-wood).



Counting snakes

Joining an adder survey with the Quantock Landscape Partnership Scheme was a great way for an 11-strong team from Hinkley Point C to get involved in local conservation work.

With their input, the survey gained a new record for the spread of the snakes locally. The sighting of adders on this occasion expanded the previously known distribution, with one adder being found a significant distance away (between 0.6-1.1km). Wildlife Officer Jem Gibson said: "This new recording wouldn't be possible without big groups like this, as there's such a vast area to search.

"The survey helps us identify some of the habitat areas that are important to the Quantock adders; knowing where they are can help us protect them from harm and

understand how to manage the land better.

"Taking part in an adder survey makes you more observant. You will hear birds such as skylarks and see other creatures in the bracken, like lizards and beetles.

"It's a nice opportunity to chat to like-minded people and connect over a mutual goal too. It's valuable to gain diverse opinions about the environment from the people working at Hinkley Point C."

Read more about the Quantock Landscape Partnership Scheme at qlps.org.



A warmer welcome

Moved by the plight of thousands of refugees fleeing war, Shayne Andrews, G4S Service Support Lead, answered the call for volunteers to help the charity CHARIS Refugees create a new processing centre in Taunton.

Armed with £250 worth of cleaning supplies and painting equipment donated by G4S Facilities Management, Shayne helped spruce up the building's reception and meeting rooms.

He said: "I wanted to help welcome displaced people here. It's very sad to see people having to leave their homes, so I'm determined to do what I can."

Visit [charisrefugees.org](https://www.charisrefugees.org) for more about the charity.

GET IN TOUCH

Have an interesting story you'd like to share, or know someone who has?

VISIT: edfenergy.com/hpc

EMAIL: hinkley-enquiries@edf-energy.com

CALL US: 0333 009 7070

TWEET US: @hinkleypointc

INSTAGRAM: [hinkleypointc](https://www.instagram.com/hinkleypointc)

Sign up to Plugged in

To receive **Plugged in** straight to your inbox, sign up to the email distribution list by heading to: edfenergy.com/pluggedin

Stacy's welcome



It's exciting to be publishing my second edition of our community magazine. Once again, we have selected a diverse compilation of stories, features and insights that explore Hinkley Point C and our local community.

Within these pages, we talk about progress made towards building a new nuclear power station and show you exciting events taking place on the project.

We also proudly highlight some remarkable individuals, including Haydon Davis, Hinkley Heath's new Physiologist, and Justine Goff, Hinkley Point C Mental Health Programme Lead, as well as delving deeper into the wider benefits of the project.

I hope you enjoy reading our magazine and discover stories that are of interest to you. Your views are invaluable, and I welcome your thoughts and feedback.

Stacy Walker, **Plugged in** Editor

MULTI-MILLION INVESTMENT IN BREAN



Following a £2 million investment from Hinkley Point C, Brean Sands Holiday Park has been refurbished. It now accommodates 900 team members building the power station.

Brean Sands Holiday Park is now a home from home, accommodating team members helping to build the new power station.

After months of refurbishment work, the park has been revitalised, offering upgraded accommodation and enhanced leisure facilities, including a new gym.



The transformation of the park followed engagement with the local community, council members, and business organisations, which commenced in the autumn of 2022.

Year-round benefits

Hinkley Point C's use of the park can help in supporting the local economy throughout the year.

Eighty year-round jobs have been created within the community, and those staying at the park will help by spending millions of pounds in the local economy, come rain or shine.

People from Brean, Berrow and Burnham-on-Sea will also benefit.

Community groups have access to Hinkley Point C's £20 million community fund.

More than £200,000 has already been provided to local community schemes in the area – from the Nornen Community Theatre project in Berrow to improved sports facilities and an upgraded theatre in Burnham.

It's accepted that some businesses could be affected by Hinkley Point C's use of the holiday park during the summer season.

To help, they're stepping in with business support grants and funding marketing campaigns to bring new visitors to the area.

VIP visitors impressed

Senior politicians from across the political spectrum visited Hinkley Point C during the Spring.

In April, Grant Shapps, Secretary of State for the Department for Energy Security and Net Zero, and Agnès Pannier-Runacher, the French Minister for the Energy Transition, made a joint visit, along with Luc Remont, the new Chairman and Chief Executive Officer of EDF.

Sir Keir Starmer (left), leader of the Labour Party, visited in June. Sir Keir reinforced his party's commitment to nuclear for the country and took time to

thank team members working hard to get Hinkley Point C online.

Speaking to 50 team members, he said: "You are delivering an energy supply that will power the UK for decades to come. You'll look back and see Hinkley Point C delivering energy for our country and say: 'I was a part of that'."

"Skills that we see here will be deployed at Sizewell and other plants. That is how we get the innovation and delivery of the projects that are so important to our country. Sizewell needs to move forward at pace."



Preparation for operation

Learn more about the first two steps on the path that everyone at Hinkley Point C is following to deliver clean energy.

The path to getting Hinkley Point C live is complex, but there are clear objectives that must be met between now and 2027, when the first reactor is due to start full operation.

The first of these major objectives is related to water, and lots of it.

Firstly, demineralised water is needed to complete the testing and cleaning of the pipework and large vessels that criss-cross the power station before it's brought online. Demineralised water has been filtered and purified to make sure it doesn't contain anything that might negatively affect the condition of the equipment.

Once testing is complete, the station will also need large quantities of water to condense the steam once it has been used to turn the turbines and produce electricity. This arrives from the Bristol Channel via the tunnels that have been bored under the seabed.

Onshore, work is continuing on the forebay and pumphouse. The moment the tunnels are 'opened' the seawater will begin to flow, enabling large sections of the station to be tested.

Power up

All of the thousands of components across the power station will need testing, and to do this, connecting Hinkley Point C to the national grid will be a key step.

A recent milestone moment saw the first delivery of several cabinets which contain the electrical equipment required to monitor, control and distribute electricity to the plant's equipment.



One of the tanks that will store demineralised water at Hinkley Point C.

DID YOU KNOW?

Demineralised water goes through a purification process to remove mineral impurities.

Demineralised water is used to:

- Reduce the potential for corrosion, to prevent leaks and failure of welds and pipework.
- Reduce deposits of impurities in vital equipment to improve efficiency and safety.



"Our objectives provide a blueprint for a successful and timely launch. Once we achieve our objectives one after the other, they'll provide a structured process for bringing the power station to life, checking that everything is performing as intended, and handing over an operating power station to the operations teams."

Tamer Albishawi, Chief Nuclear Officer

WHAT IS MEH?

MEH stands for Mechanical, Electrical and HVAC (Heating, Ventilation and Air Conditioning).

This means fitting all the cables and pipes needed to operate the power station. It's the next phase after the

big structures like the turbine hall, pumphouse and reactor building have been built.

The amount of work in this specialism is increasing rapidly on site and you will hear and read more about this work in

the coming issues.

Hinkley Point C will eventually be made up of 150 individual buildings, with more than 7,500 individual rooms, each featuring its own components and systems.



MEH in numbers

For Hinkley Point C to be completed, the MEH teams will install:

 **35,000** valves

 **10,400km** of cable

 **35,000** lights

 **142** tanks

 **366km** of pipework

 **106,000** mechanical supports

NUCLEAR VITAL FOR NET ZERO

The UK government has announced plans to classify nuclear power as environmentally sustainable. The move, which came as part of Chancellor Jeremy Hunt's budget, affords nuclear power significant status as part of a suite of solutions that will help the country achieve Net Zero. The plan will also include incentives for private

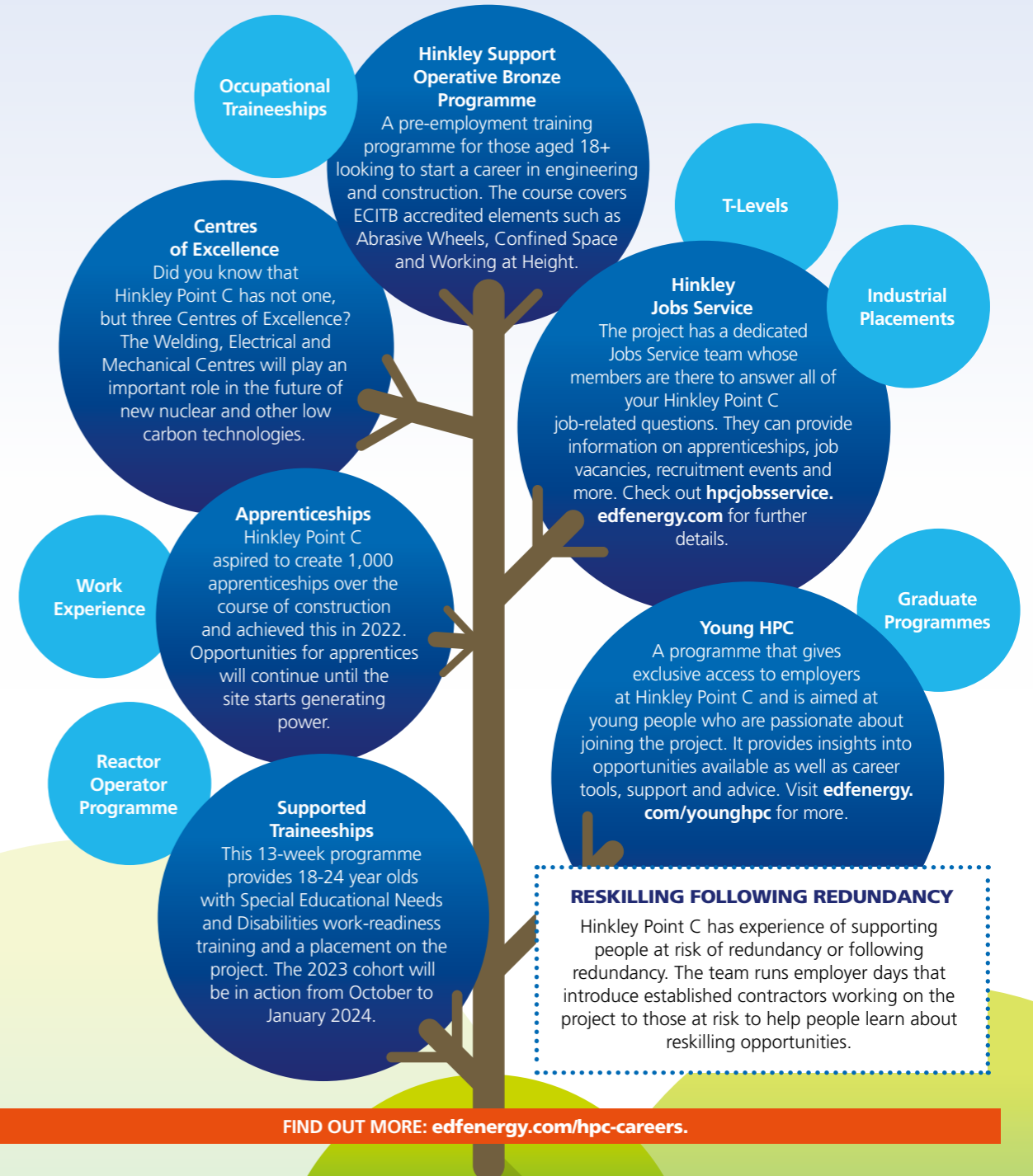
sector funding for nuclear. Mr Hunt said: "Increasing nuclear capacity is vital to meet our Net Zero obligations... so to encourage the private sector investment into our nuclear programme, I confirm that, subject to consultation, nuclear power will be classed as environmentally sustainable in our green taxonomy, giving it access

to the same investment incentives as renewable energy."

Tom Greatrex, the CEO of the UK's Nuclear Industry Association, said: "This is a huge step forward for UK energy security and Net Zero. Nuclear's inclusion in the UK green taxonomy is a vital move, following the example set by other leading nuclear nations."

Your route to a job at Hinkley Point C

From school leavers interested in science, technology, engineering and maths, to job seekers searching for employment in construction, there's something for everyone at Hinkley Point C. And there are many pathways into the project...



UP AND UNDER

Out in the Bristol Channel, two incredible vessels are helping to connect Hinkley Point C's three cooling water tunnels to the six concrete intake head structures that were installed on the seabed last year. They're rising above the sea to carry out huge feats of engineering.

WHAT IS A JACK-UP VESSEL?

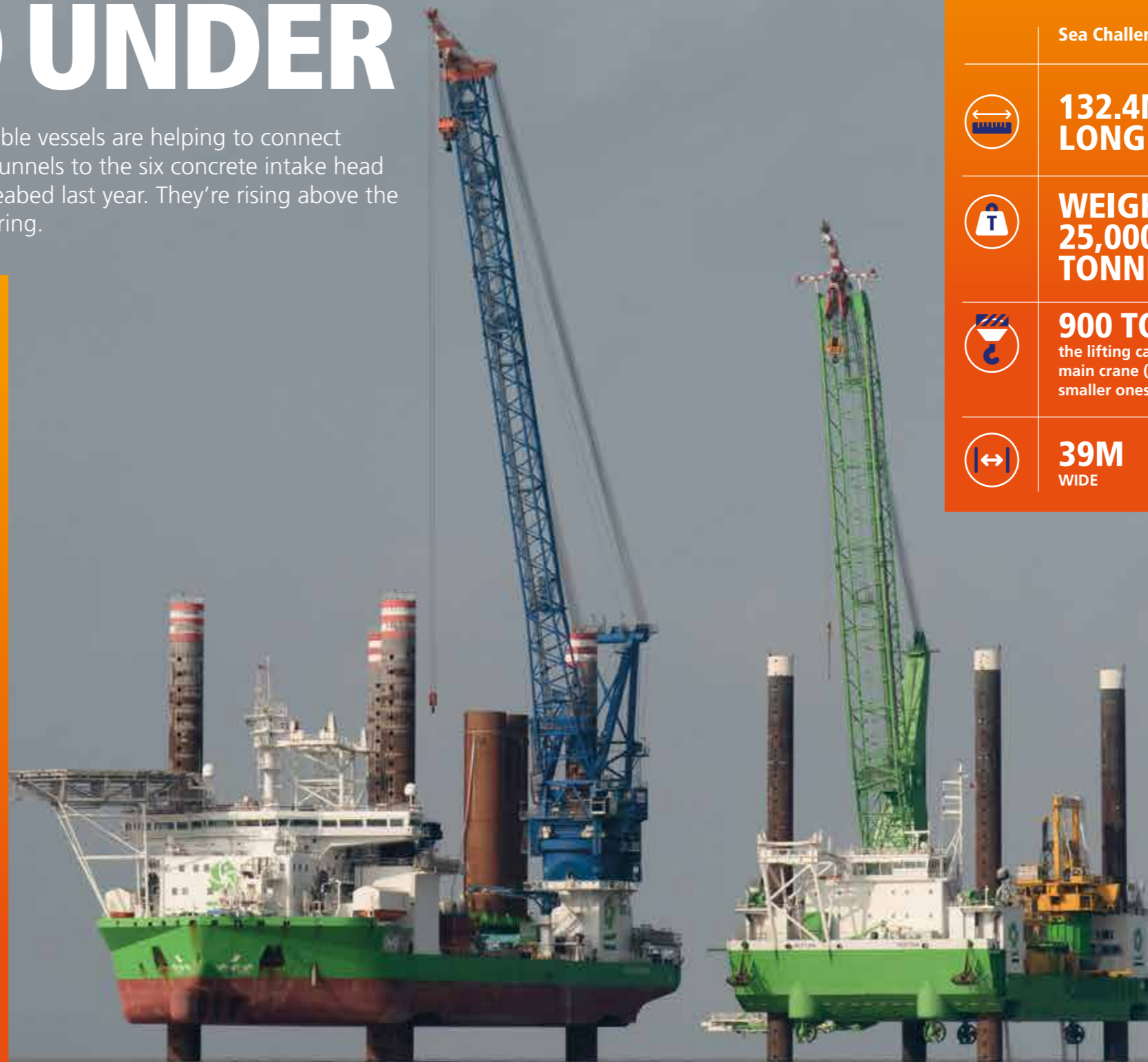
There are two jack-up vessels called Sea Challenger and Neptune and they are fantastic feats of engineering. They can extend their legs onto the seabed to create a stable platform. Cranes are operated from this platform and it's also used to install components on the seabed.

WHY ARE THEY NEEDED?

The Bristol Channel has such a high wide tidal range that it can limit time when work at sea is possible. The jack-up vessels help to avoid some of the challenging offshore conditions by standing on the seabed and rising up above the waves.

WHAT DO THEY DO?

Each vessel has its own role. Neptune will stay offshore for the duration of the work, while Sea Challenger brings the equipment out. Combined, the two vessels will install casings and liners to create shafts from the concrete head structures and into the seabed. Once the casings are installed, an enormous drill bit is lowered by Neptune through the casing to create holes of over 20 metres deep, into which steel liners are lifted and grouted into place to form the shafts. This will be repeated six times and it is a vital step in bringing in the water needed to cool the operational power station.



	Sea Challenger	Neptune
	132.4M LONG	60.25M LONG
	WEIGHING 25,000 TONNES	WEIGHING 8,500 TONNES
	900 TONNES the lifting capacity of its main crane (there are five smaller ones on board)	600 TONNES the lifting capacity of its main crane
	39M WIDE	38M WIDE

WORKING ON WELLNESS

LOOKING AFTER **BODY** AND **MIND**

BODY

Hinkley Health's new Physiologist, Haydon Davis, shares what inspired him to join the team.



Hi Haydon. Tell us about how you came to work at Hinkley Point C...

"I joined the project in February, and was drawn to it because it has such an interesting workforce. I knew I didn't want to sit at a desk all day, so it's great that I can get out on site and meet people."

What does your role involve?

"I run health screening clinics to assess the health and wellbeing of team members; checking their blood pressure, blood glucose, cholesterol and body mass index (BMI). I also organise 12-week coaching programmes for individuals on the project who are vulnerable to health problems such as diabetes and high blood pressure. By working with them to create an action plan, they can take ownership of their progress. Another important aspect is promoting monthly health and wellbeing topics, which

is a great way to speak to team members first-hand and encourage them to make positive changes."

How have you found the work so far?

"It's full-on, but the team has been helpful and welcoming, and it's so rewarding helping others. This is an interesting opportunity that I couldn't find anywhere else."

What are you looking to achieve in your career?

"One of my goals is to be trained in smoking cessation, so I can support team members who are trying to quit. Ultimately, I'm looking forward to getting to know more people on site. The interactions in the clinics are great as they give me an insight into people's lives, and that connection is what I really enjoy about the role."

HONING IN ON HEALTH

As well as providing first aid and treatment, Hinkley Health supports the project by leading and training the Hinkley Point C site emergency response team, administering the project's drugs and alcohol testing policy, and offering occupational health and lifestyle advice.

As a massive construction project employing thousands of people, Hinkley Point C has a support system in place to make sure every single individual has access to health and wellbeing services should they need them.

MIND

Justine Goff, Hinkley Point C Mental Health Programme Lead, speaks about mental health and why it's such an important focal point for the project.



Hi Justine. Can you tell us a bit about you?

"I joined the project seven years ago as a PA to the Construction Director and I remember there were conversations going on around the construction industry having a high number of mental health issues. Recently a job was created for a Mental Health Programme Lead, and because I've been so involved with the programme, it was a great fit for me. It's a really exciting opportunity, not just for me, but for the project, too."

How did the Mental Health Programme develop?

"Starting out, it was like we had a can of worms – we could either close the lid on the mental health problem and ignore it, even though it would always be there, or we could open the can and deal with it by putting in as much support as possible. We decided to do something about it. I was part of the first cohort of Mental Health Buddies on site and since then, I've been heavily involved in how we tackle mental health here."

What mental health support is available?

"As well as our network of Mental Health Buddies, our office buildings have Time to Talk rooms, which are quiet spaces stocked

with resources where team members can have confidential conversations. We have a Chaplaincy team who can provide pastoral care and a listening ear to people of all faiths and none, and Hinkley Health is there for any health and wellbeing queries."

How does the Mental Health Buddy training work?

"We run monthly courses teaching volunteers how to spot when people are struggling, how to listen to others and signpost to appropriate help if required. We're not training people to be professional counsellors, we train them to have a better understanding of mental health issues that can impact anyone at any time and how to help. Our Mental Health Buddies are amazing, and I am so proud of their work."

Why is it important to keep up the conversation around mental health?

"By engaging people and increasing their understanding, we can help break the stigma. Hinkley Point C takes mental health seriously 365 days a year. As a project, we wouldn't be where we are now if we didn't believe in supporting our team members, and this means looking out for their physical and mental wellbeing."

DID YOU KNOW?

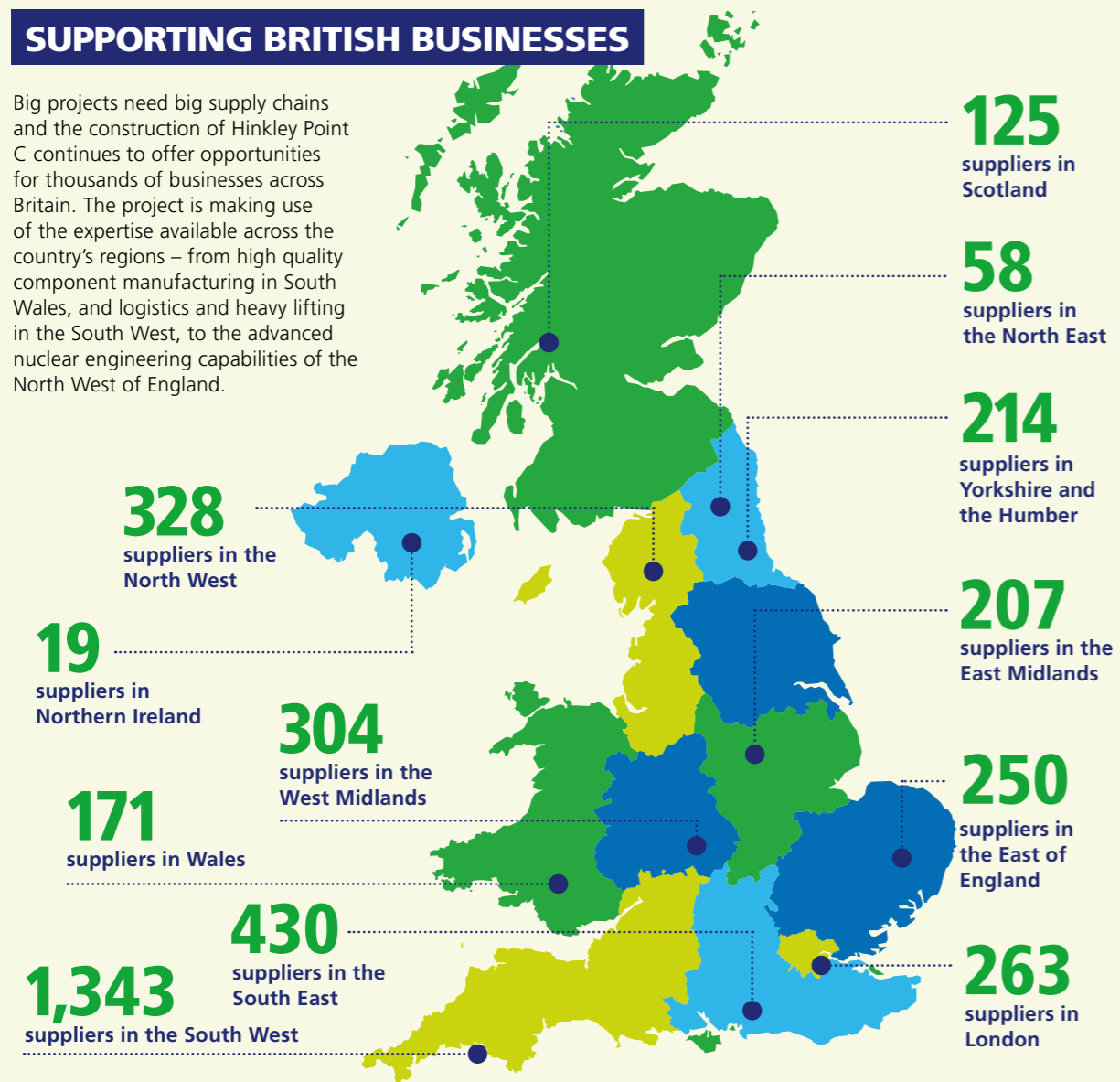
- To date, more than 570 Mental Health Buddies have been trained at Hinkley Point C – with some of them appearing on the cover!
- There are currently seven Mental Health England First Aid Instructors employed on the project. These are the team members qualified to deliver the Mental Health Buddy training course.

BRINGING BENEFITS

Hinkley Point C is vital in the fight against climate change and ensuring energy security but it also proves that the transition to Net Zero can also deliver huge social and economic benefits for Somerset and the South West Region.

SUPPORTING BRITISH BUSINESSES

Big projects need big supply chains and the construction of Hinkley Point C continues to offer opportunities for thousands of businesses across Britain. The project is making use of the expertise available across the country's regions – from high quality component manufacturing in South Wales, and logistics and heavy lifting in the South West, to the advanced nuclear engineering capabilities of the North West of England.



INVESTING IN BUSINESS AND THE COMMUNITY



3,700

UK businesses are in the Hinkley Point C supply chain

£5.3 BILLION

has been spent with companies based in the South West so far... that's three times the original commitment



£14.5 MILLION

has been provided to local projects through the Hinkley Point C Community Fund

READ THE REPORT

For further details on how Hinkley Point C is making a positive impact, read the full report by scanning the QR code.

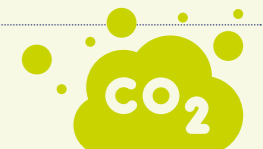


SUPPORTING THE ENVIRONMENT



65,000

trees and shrubs planted around the site



50

environmental specialists across the project



9 MILLION

tonnes of CO₂ will be avoided each year, compared to producing electricity with a gas power plant



100,000

lorry loads will be taken off the road by using the jetty

SKILLS AND EMPLOYMENT



30,000

training places will be available before Hinkley Point C's completion

1,131

apprentices have been trained at Hinkley Point C so far, already surpassing the original target of 1,000

19,250

jobs have been created directly on site to date against a target of 25,000



22,000

people from across the UK are working on Hinkley Point C

1,820

people have been helped into new jobs by the Hinkley Jobs Service to date



has been invested directly into education, skills and employment



"The project shows that the transition to clean wind, solar and nuclear electricity is not only good for consumers, but also a huge opportunity to deliver growth."

Stuart Crooks CBE, Managing Director, Hinkley Point C



"I am loving my course – I'm being shown all different types of welds and techniques."

Nicola Ellen Giles, Welding Apprentice, Cavendish Nuclear



"The training equipment on site is so advanced, it feels like we're getting world-class training."

Amal Jagadeesh, Trainee Reactor Operator, EDF



SUPPORTING WOODLAND WARRIORS

Funding from Hinkley Point C's Safe Day, Safe Month initiative has made a big difference to The Woodland Warrior Programme, which provides therapeutic activities for armed forces personnel, veterans and members of the emergency services.

The Woodland Warrior programme was set up in 2019 by husband-and-wife team Nick and Louise Goldsmith (pictured, inset). It's set within a woodland environment to engage people with the natural world as a means of recuperation and relaxation, and the courses include

everything from foraging and woodcraft to beekeeping and archery.

Hinkley Point C has supported the programme by donating £5,400. This donation has been used to contribute to the cost of installing solar panels at the organisation's recently acquired classroom, allowing the team of five to operate more sustainably. Louise said: "We're really grateful for the support. The funding hasn't just allowed us to go off-grid, but is also allowing us to keep our costs down and get more people in, which is great, as it's a real



Did you know?
The Safe Day, Safe Month fund helps drive safety and environmental performance by donating £50 for every successful Safe Day and £3,000 per Safe Month to a local charity.

community project. "There are so many benefits to experiencing our retreats. As well as being good for your mental and physical health, they're also a great opportunity to learn new skills, try a different hobby, and connect with like-minded people. "Sometimes people are inspired to pursue a new career or qualification in something they've found interesting, too. What we do helps build self-esteem through peer-to-peer support." For more information, visit woodlandwarriorprogramme.org.

A tale of three tails

A team from HPC encountered a hairy find when they uncovered a nest of small rabbits appearing to be abandoned and in need of urgent help. Work was stopped immediately to protect and carefully collect the rabbits. The project's Environmental team also responded promptly by contacting the Secret World Wildlife Rescue centre in Highbridge to arrange for future care. The rabbits were brought to the centre within an hour of the find. Thanks goes to Gwyn Jones, General Foreman, and his team at Turnbull Infrastructure

and Utilities Ltd, along with the Environmental team, for reacting so quickly. He said: "As we are working in their habitat with such a large construction project, it falls within our duty of care to protect the wildlife on and around the site as much as feasibly possible. Our team are pleased to know our actions helped the rabbits. A great teamwork story for all involved." Thanks to this quick and collaborative response, three rabbits survived and are recovering well, proving popular with staff and visitors to the rescue centre.

KID'S CORNER

It's all fun and games on our children's activity page...

DON'T FORGET...
...to check out the solutions to the puzzles online at: edfenergy.com/pluggedin

Quiz? Test your knowledge of Hinkley Point C!

- How many Mental Health Buddies have been trained at Hinkley Point C to date?
A) 470+ B) 570+ C) 670+
- How many apprentices have been trained on the project so far?
A) 131 B) 1,131 C) 2,131
- Which of these planets is also the name of a jack-up barge at Hinkley Point C?
A) Neptune B) Jupiter C) Mars
- What is the name of the Hinkley Point C skills programme aimed at young people passionate about joining the project?
A) Hello HPC B) Generation HPC C) Young HPC
- What is the name of the report that charts the wider benefits of Hinkley Point C's construction?
A) Socio-Economic Report B) Community Impact Report C) Project Particulars Report

Did you know?

The power station needs a lot of demineralised water.

Eventually, there will be a peak of 3,530m³ of demineralised water used in a day, which is enough to fill more than

20,000 bathtubs.



HINKLEY POINT C WORDSEARCH

We've hidden 12 words related to the project in the grid. Can you spot them all? They can be found across, down or diagonally.

L	A	B	N	C	A	J	T	L	H	O	R	Z	Y
T	K	P	U	O	B	T	R	X	R	F	P	V	I
M	N	R	X	M	R	R	A	N	R	F	C	V	G
Y	R	O	T	M	I	Q	I	U	X	S	O	O	I
R	M	J	F	I	S	H	N	A	J	H	M	L	K
H	T	E	G	S	T	E	E	P	G	O	M	U	T
N	G	C	X	S	O	A	E	S	B	R	U	N	S
T	E	T	O	I	L	L	S	Z	W	E	N	T	C
O	T	U	A	O	Q	T	H	R	E	A	I	E	P
A	V	Y	T	N	V	H	I	P	S	H	T	E	U
G	T	W	R	R	Q	M	P	L	L	B	Y	R	M
U	E	X	U	F	O	R	S	I	Y	A	D	E	P
A	W	Q	I	J	F	N	K	U	I	P	N	Z	S
D	V	C	A	B	I	N	E	T	S	S	I	T	J

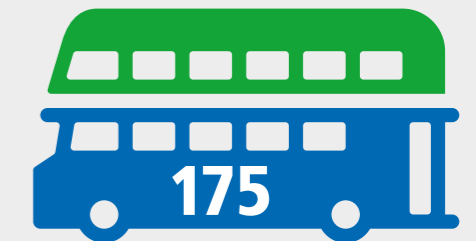
- BRISTOL CABINETS
- COMMISSION
- COMMUNITY HEALTH
- NEUTRON OFFSHORE PLANT
- PROJECT PUMPS
- TRAINEESHIP VOLUNTEER

CAN YOU SPOT THEM ALL?

Hinkley Point C will have more than



10,000KM of cables installed when operational. Lay that end to end, starting at Bridgwater, and you'll reach Malaysia.



You could fit more than 175 double-decker London buses on the deck of the jack-up vessel Sea Challenger.

WALK THE WALK



Photo credit: Chris Jelley

Getting out and about in the fresh air is great for your health and wellbeing, and there are plenty of beautiful places to explore in Somerset and beyond. 'Storywalks' opens a world of exciting journeys with its series of digital trails. There are walks in 15

locations to choose from and whichever path you take, you'll be able to find out more about the area with its audio commentary. A good example of this is the Comwich route that offers you a half-mile stroll while finding out some fun facts, including

insights into curious village traditions and the life of a secretive Tudor alchemist. Visit englandcoastpath.storywalks.info, or download the Ordnance Survey Secret Stories app to get started. Outdoor adventures, here we come!



Discover Brean

Brean is a fantastic holiday destination for families and couples. Located on the Somerset coastline, with miles of sandy beach and easy access to the county's unique tourist attractions, it's a must-visit location in the area.

- **Brean has some of the most iconic family attractions in Somerset.**
- **Calling beach lovers: The stretch of sand between Burnham-on-Sea and Brean Down is the second longest in Europe and includes eight beaches.**
- **Brean Down offers fabulous 360-degree views taking in the sea, the Somerset Levels and some of the county's best known features such as Glastonbury Tor and the Mendip Hills.**

To plan your next trip, head to discoverbrean.co.uk.